

Indiana University is one of the world's foremost public institutions—and the epitome of the modern university. We expand the frontiers of knowledge and creativity. We improve people's lives in our state and around the world. And we help students of all kinds reach their potential and prepare for a lifetime of success.

STATE IMPACT

7

Regional campuses located across the state



9

IU School of Medicine campuses

ACADEMICS

20K+

Classes offered each semester

120+

Online degrees and certificate programs



380+

Study abroad programs

300+

Museums, institutes, and research centers

FACILITIES

3,042

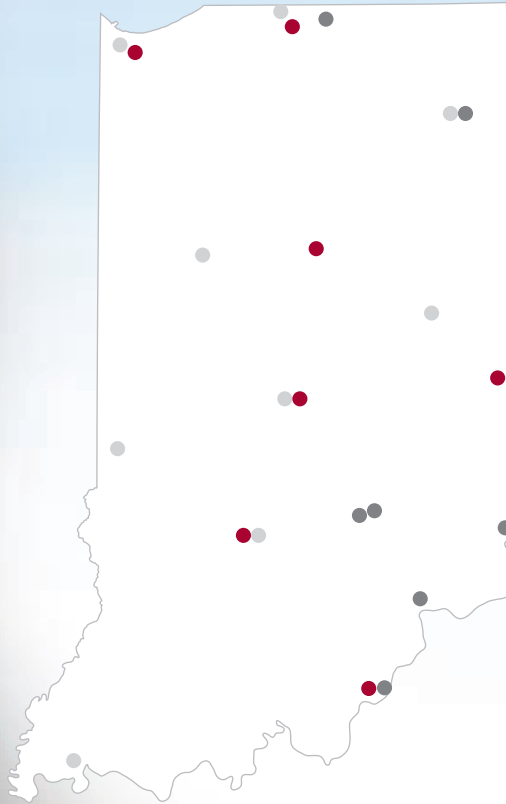
Acres On campus



4,165

Acres Off campus

Indiana University, established 1820



● IU campus ● IU center ● IU School of Medicine campus



DISCOVER
**INDIANA
UNIVERSITY**



Find more facts at uirr.iu.edu

IU President: Michael A. McRobbie
107 S. Indiana Avenue
Bloomington, Indiana 47405-7000
812-855-4848
www.iu.edu



INDIANA UNIVERSITY

2020-2021 FACTS

DEGREES FOR DOERS, DREAMERS, AND LEADERS

ACADEMIC PROGRAMS

980+

Undergraduate **497**

Graduate **488**

CREDIT HOURS

1.2M

DEGREES AND CERTIFICATES GRANTED

23,916

Bachelor **15,583**

Master and specialist **5,028**

Doctoral **1,563**

Associate **160**

Certificate **1,582**

ALUMNI AROUND THE WORLD

742,359

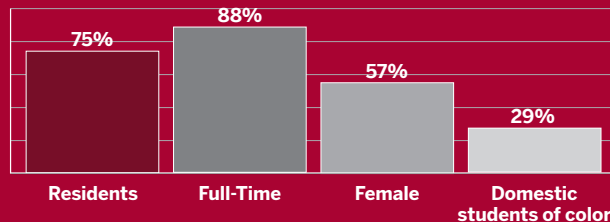
Alumni living in Indiana **382,435**



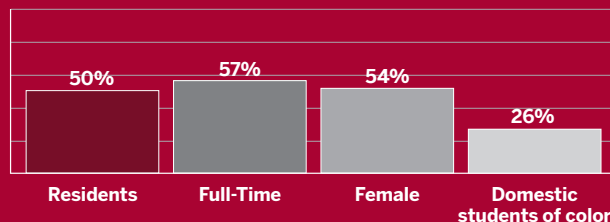
DEGREE-SEEKING DEMOGRAPHICS

90,090 ENROLLED

Undergraduates **70,415**



Graduates **19,675**



United States **50 + DC**

Countries **165**

International **7%**

Online **91%**



INCOMING BEGINNER PROFILE

SAT composite **1183**

ACT composite **25**

High school GPA **3.58**

OUTCOME MEASURES

First-Year retention rate **82%**

6-Year graduation rate **64%**

4-Year graduation rate **53%**

FINANCIAL AID

\$1.2B+ FINANCIAL AID AWARDED

\$394M+ INSTITUTIONAL GIFT AID AND LOANS

49% BACHELOR'S DEGREE RECIPIENTS WITHOUT DEBT

DEGREE-SEEKING UNDERGRADUATE AID

Received financial aid **78%**

Received student loans **38%**

Received Pell Grants **29%**

Received 21st Century Scholarships **10%**

TUITION AND FEES

	In-State	Out-of-State
Undergraduate	\$11,221.20	\$37,600.64
Graduate	\$11,192.86	\$33,338.62
UG cost of attendance	\$26,187.20	\$52,566.64

FACULTY AND STAFF

21,436

Undergraduate student/faculty ratio **15:1**

Total instructional faculty **8,141**

Full-Time **70%**

Female **48%**

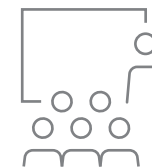
Faculty of color **20%**

Ph.D. or terminal **74%**

Tenure **76%**

Total affiliated employees* **41,049**

*Includes students and other temporary workers



FINANCE

\$3.7B+ OPERATING BUDGET

\$854M+ FUNDING TOWARD RESEARCH

OPERATING BUDGET BREAKDOWN

- General funds
- Contracts and grants
- Auxiliary enterprises
- Designated and other restricted
- Medical practice funds

