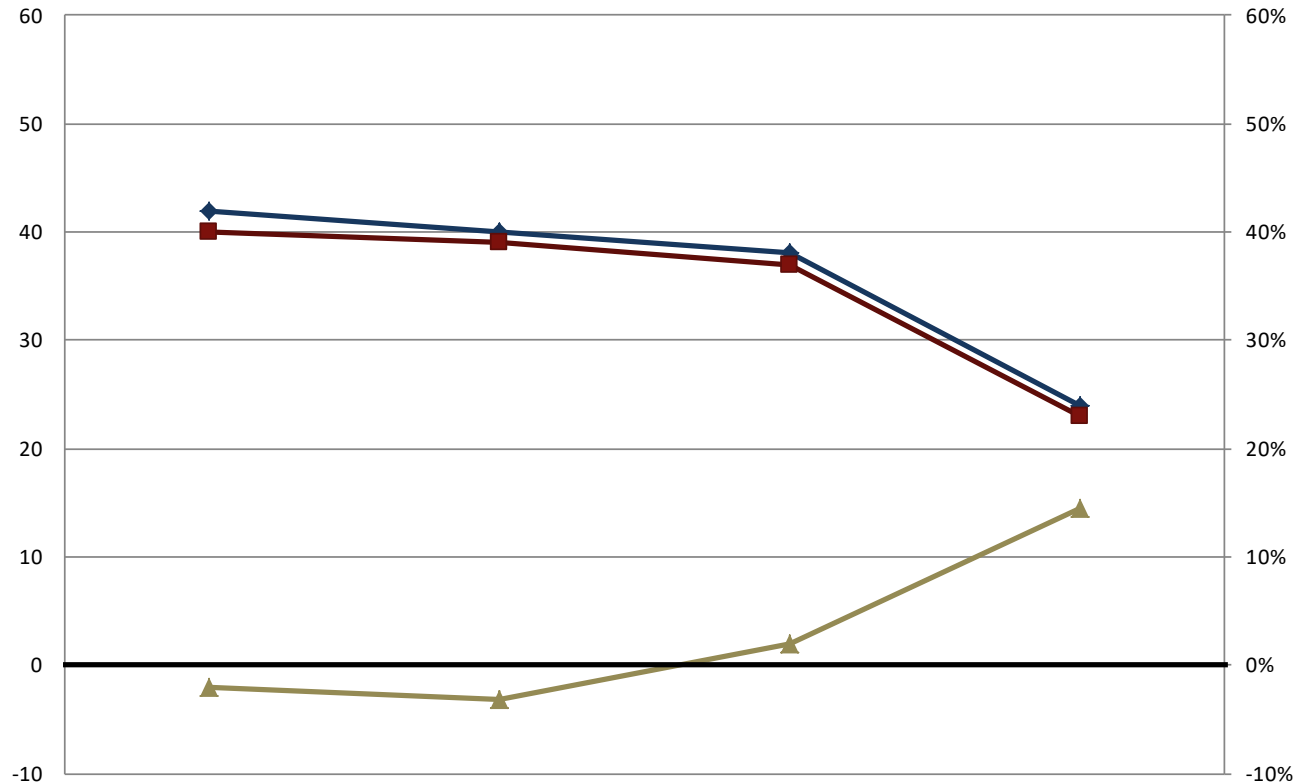




INDIANA UNIVERSITY

Bloomington

Average Undergraduate Class Size by Level of Instruction and Percent Change in Enrollment by Class Level

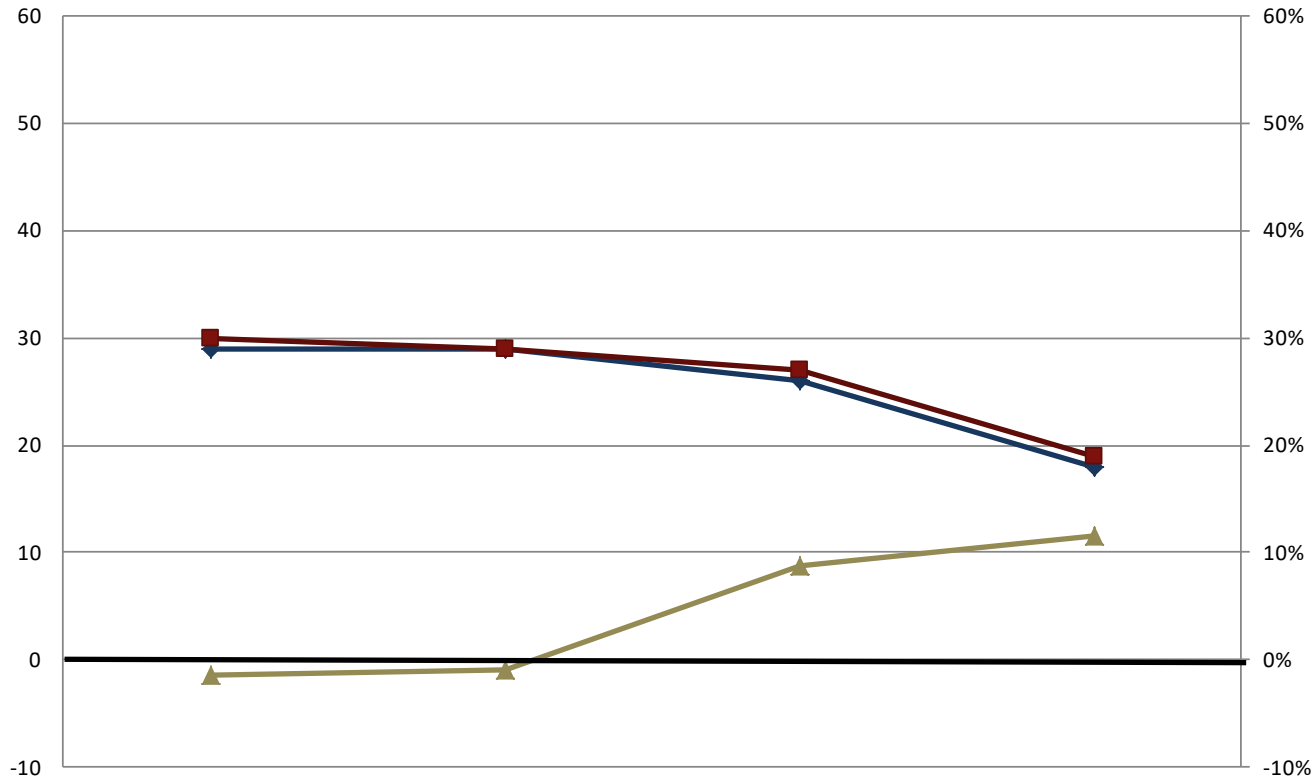


	100 Lvl (Frosh)	200 Lvl (Soph)	300 Lvl (Jr)	400 Lvl (Sr)
2008	42	40	38	24
2012	40	39	37	23
Enrl Chg. %	-2%	-3%	2%	15%
2012 Enrol	7,962	7,761	7,312	8,892



IUPUI

Average Undergraduate Class Size by Level of Instruction and Percent Change in Enrollment by Class Level

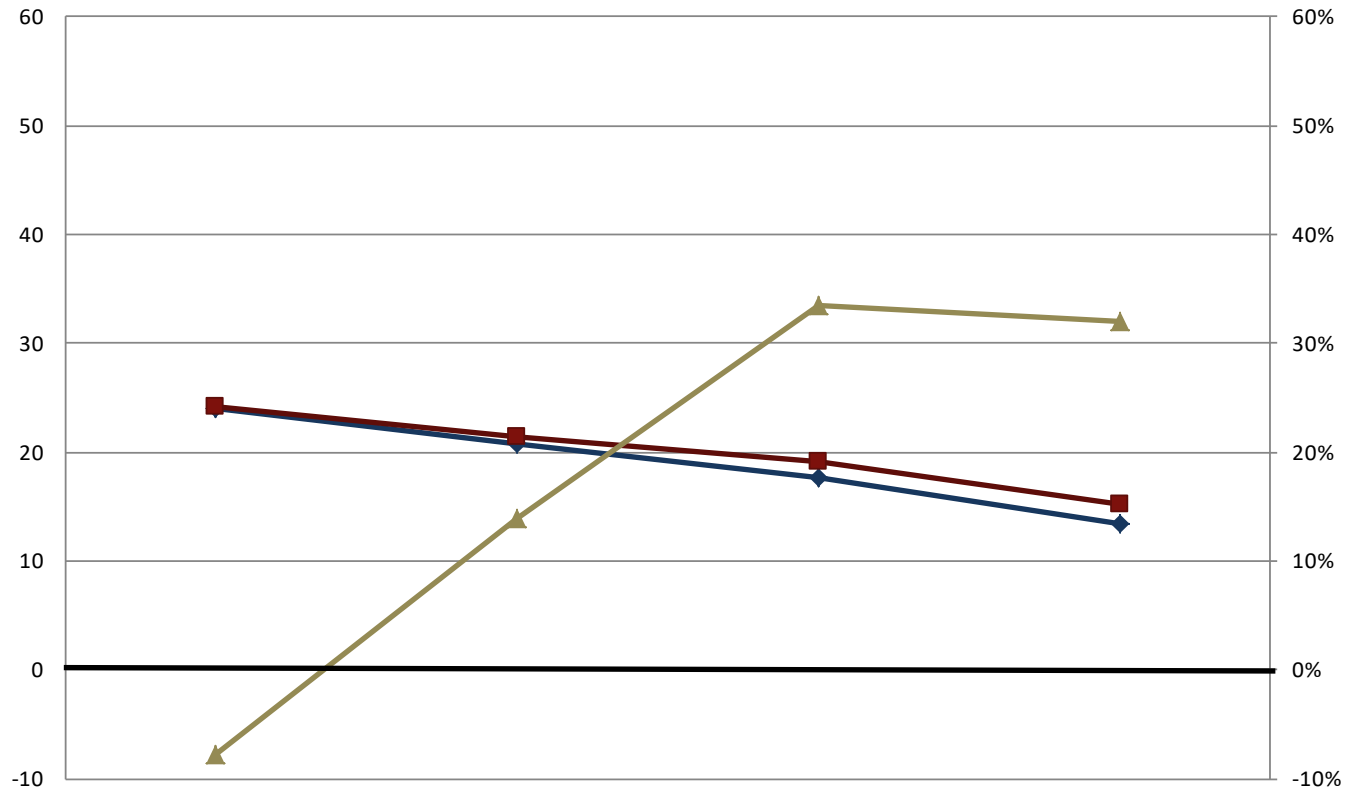


		100 Lvl (Frosh)	200 Lvl (Soph)	300 Lvl (Jr)	400 Lvl (Sr)
	2008	29	29	26	18
	2012	30	29	27	19
	Enrl Chg. %	-1%	-1%	9%	12%
	2012 Enrol	5,072	4,680	4,392	7,235



Regional Campus

Average Undergraduate Class Size by Level of Instruction and Percent Change in Enrollment by Class Level

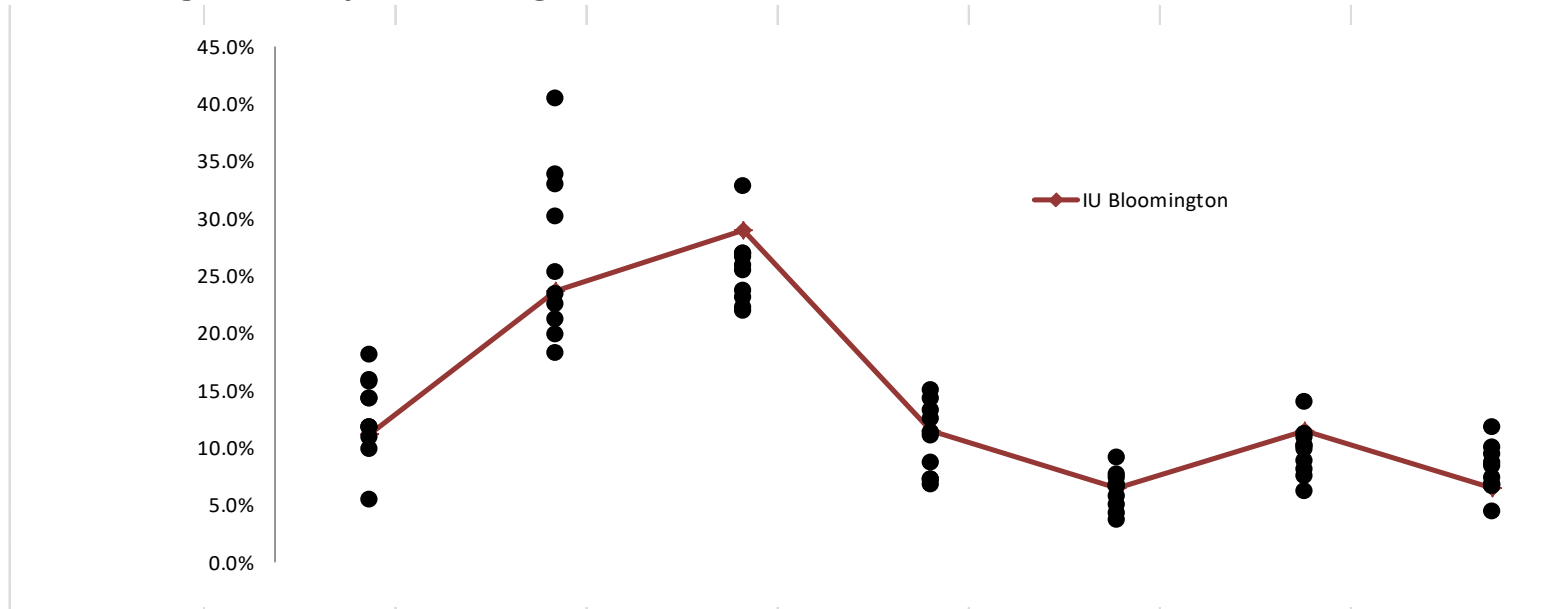


		100 Lvl (Frosh)	200 Lvl (Soph)	300 Lvl (Jr)	400 Lvl (Sr)
	2008	24	21	18	13
	2012	24	21	19	15
	Enrl Chg. %	-8%	14%	34%	32%
	2012 Enrol	6,482	5,193	4,312	6,161



INDIANA UNIVERSITY

Fall 2012 Class/Section Offerings by Size: Bloomington Compared to Big 10 Publics

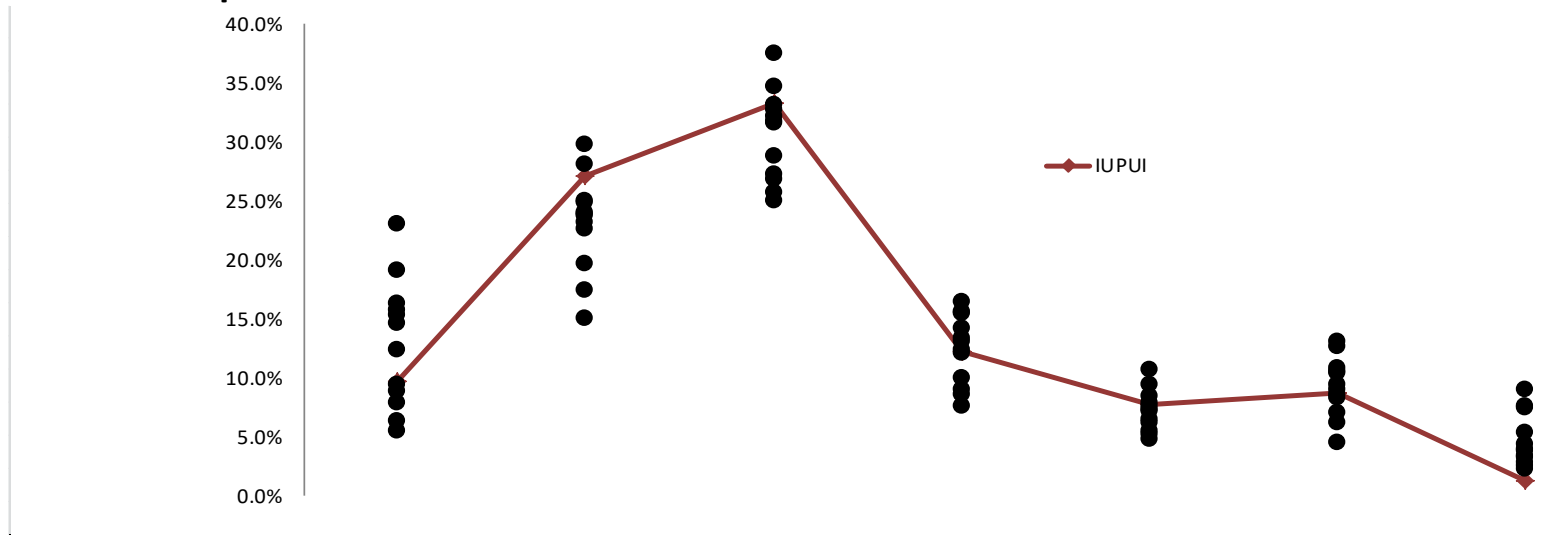


	2 - 9	10 - 19	20 - 29	30 - 39	40 - 49	50 - 99	100+
IU Bloomington	11.2%	23.7%	29.1%	11.5%	6.5%	11.5%	6.5%
Illinois	11.8%	30.2%	22.0%	11.0%	5.0%	9.9%	10.1%
Iowa	10.9%	40.5%	26.9%	7.3%	3.7%	6.2%	4.4%
Michigan	14.4%	33.0%	23.6%	7.3%	4.2%	10.2%	7.4%
Michigan State	5.4%	18.2%	32.8%	15.1%	7.7%	8.9%	11.8%
Minnesota	14.2%	25.4%	25.4%	8.7%	6.6%	11.2%	8.4%
Nebraska	18.1%	21.1%	26.6%	13.3%	6.8%	7.5%	6.6%
Ohio State	9.9%	19.8%	25.9%	12.5%	9.1%	14.0%	8.7%
Penn State	16.0%	23.5%	27.0%	11.3%	7.3%	8.1%	6.8%
Purdue	15.7%	22.6%	23.1%	14.2%	6.7%	10.9%	6.7%
Wisconsin	11.8%	33.9%	22.2%	6.7%	5.7%	10.2%	9.4%



INDIANA UNIVERSITY

Fall 2012 Class/Section Offerings by Size: IUPUI Compared to Peers

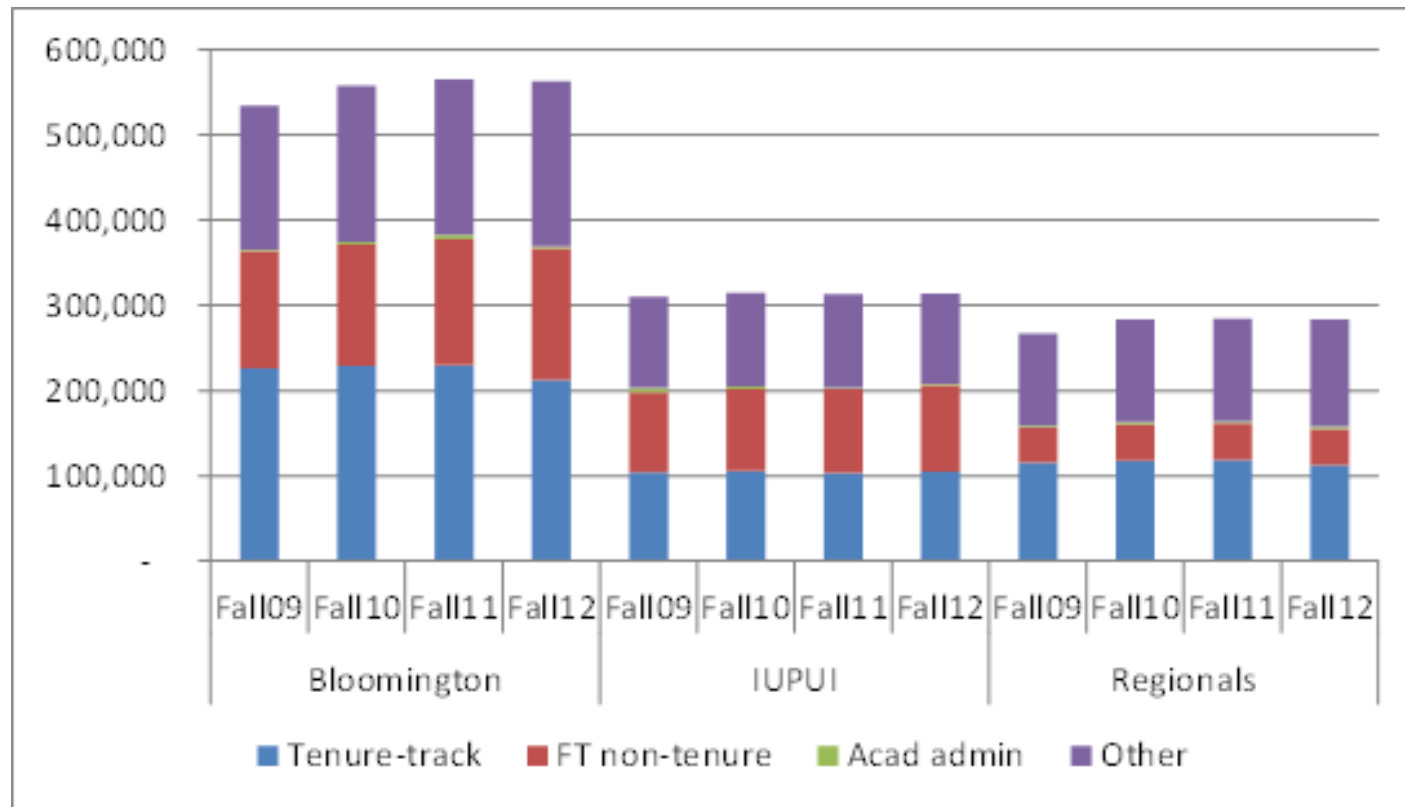


	2 - 9	10 - 19	20 - 29	30 - 39	40 - 49	50 - 99	100+
IUPUI	9.7%	27.0%	33.3%	12.2%	7.7%	8.8%	1.3%
Temple U.	6.3%	29.8%	32.2%	16.4%	7.9%	4.5%	2.8%
U. of Buffalo	14.6%	19.6%	28.8%	9.0%	7.3%	13.1%	7.6%
U. of AL-Birmingham	15.3%	22.7%	26.9%	12.1%	6.5%	12.7%	3.9%
U. of Cincinnati	16.4%	24.9%	31.8%	12.3%	5.3%	7.1%	2.2%
U. of CO-Denver	5.5%	24.0%	34.7%	13.3%	10.6%	8.6%	3.2%
U. of IL-Chicago	8.9%	25.1%	32.7%	7.7%	7.5%	9.1%	9.1%
U. of Louisville	9.4%	17.4%	37.6%	15.6%	8.4%	8.3%	3.4%
U. of New Mexico	15.7%	23.7%	31.6%	8.6%	5.5%	10.5%	4.4%
U. of South FL	12.4%	15.1%	33.1%	15.5%	9.4%	10.8%	3.8%
U. of Utah	19.1%	23.9%	25.0%	10.0%	6.2%	10.5%	5.3%
VA Commonwealth U.	7.9%	28.2%	25.7%	14.2%	7.1%	9.4%	7.5%
Wayne State U.	23.1%	23.2%	27.2%	13.1%	4.7%	6.2%	2.5%

**reflects 2011-2012 data*

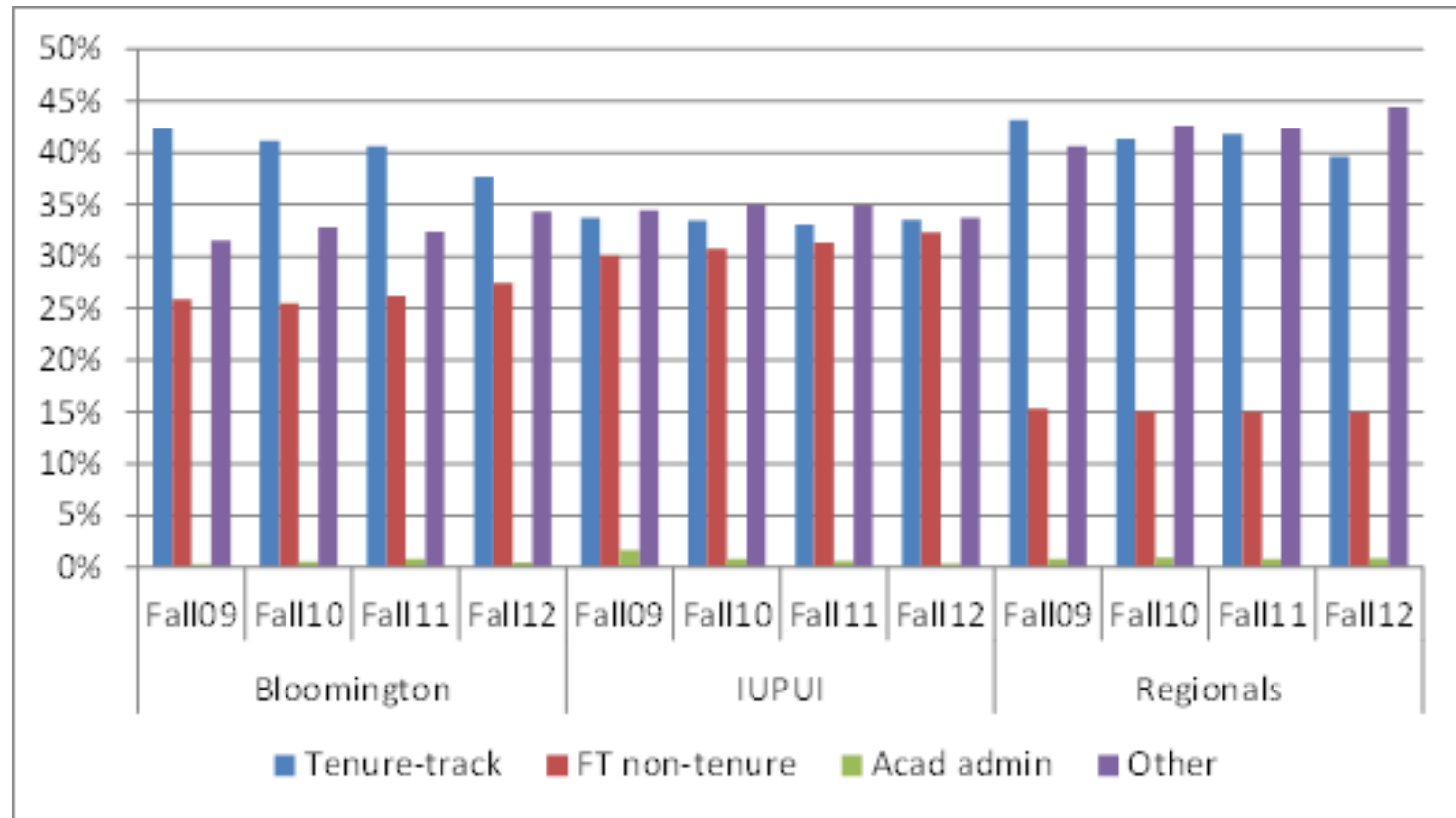


Total Credit Hours Taught by Faculty Group: Bloomington, IUPUI, and Regional Campuses



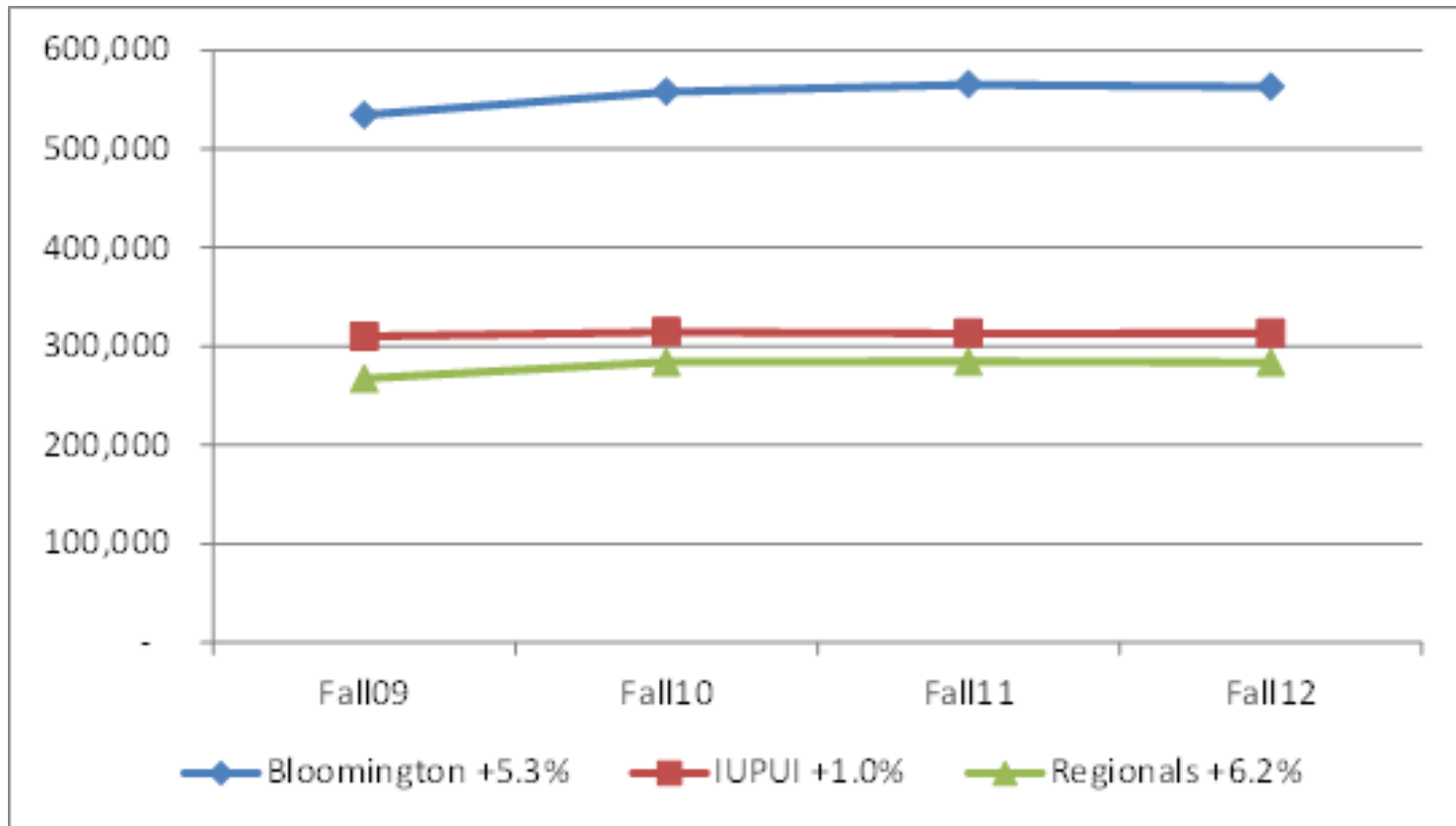


Percentage of Credit Hours Taught by Faculty Group: Bloomington, IUPUI, and Regional Campuses





Total Credit Hours Taught Fall 2009 – Fall 2012: Bloomington, IUPUI, and Regional Campuses





Credit Hours & Sections Taught by Tenured/Tenure Track Faculty, Fall 2009 – Fall 2012: Bloomington, IUPUI, and Regional Campuses

